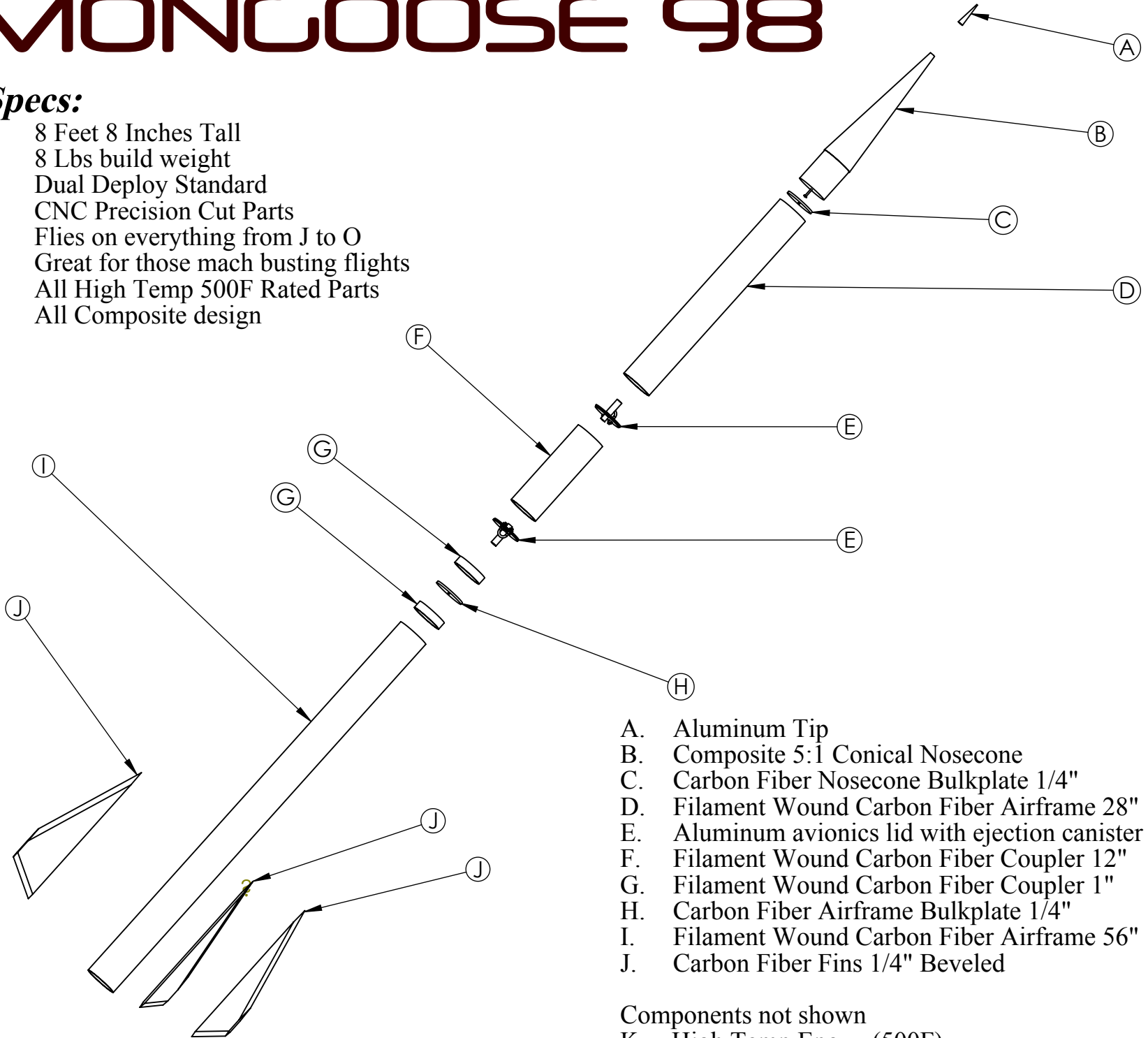


MONGOOSE 98

Specs:

1. 8 Feet 8 Inches Tall
2. 8 Lbs build weight
3. Dual Deploy Standard
4. CNC Precision Cut Parts
5. Flies on everything from J to O
6. Great for those mach busting flights
7. All High Temp 500F Rated Parts
8. All Composite design

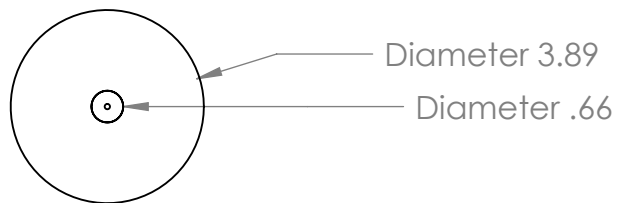
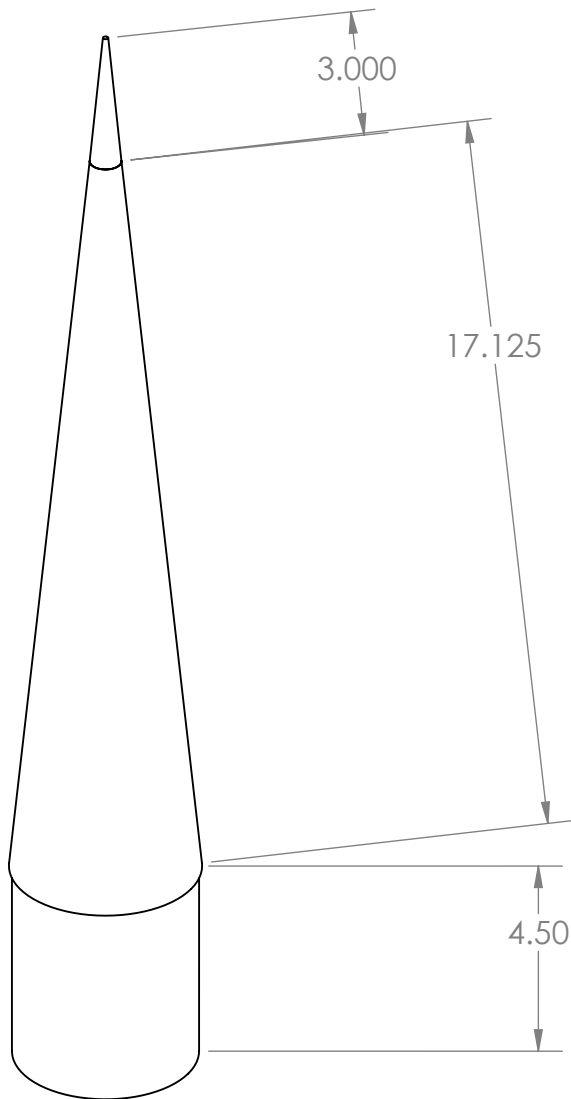


- A. Aluminum Tip
- B. Composite 5:1 Conical Nosecone
- C. Carbon Fiber Nosecone Bulkplate 1/4"
- D. Filament Wound Carbon Fiber Airframe 28"
- E. Aluminum avionics lid with ejection canister
- F. Filament Wound Carbon Fiber Coupler 12"
- G. Filament Wound Carbon Fiber Coupler 1"
- H. Carbon Fiber Airframe Bulkplate 1/4"
- I. Filament Wound Carbon Fiber Airframe 56"
- J. Carbon Fiber Fins 1/4" Beveled

Components not shown

- K. High Temp Epoxy (500F)
- L. Fin Allignment Guides





6061 Aluminum Screw On Tip
Aluminum tips are available in several anodized colors



#10 32 Steel Stud



Graphite Composite Nosecone